

WALTCO



HLF-25, 30, 40, & 50 SERIES

Visit us at www.waltco.com

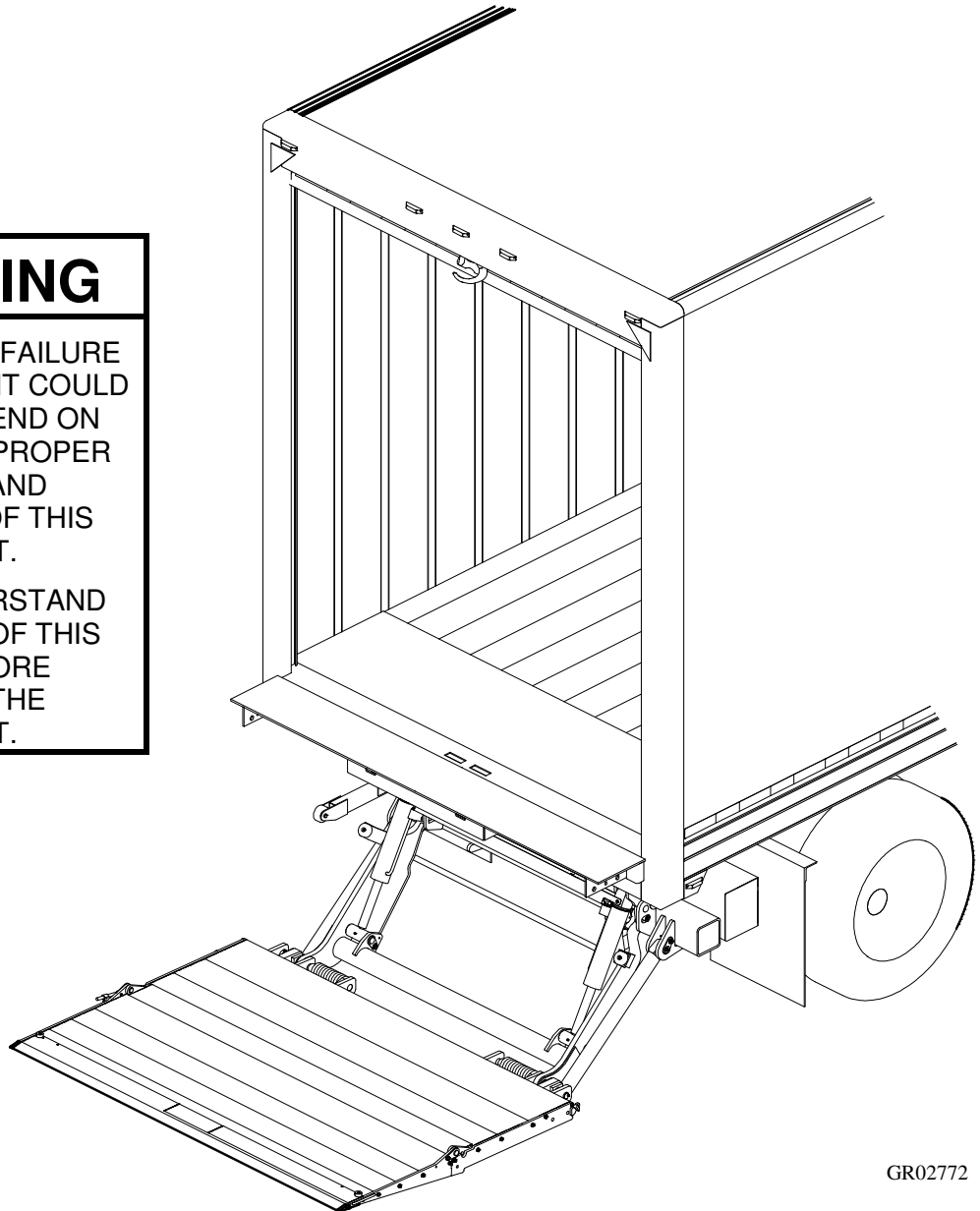
Owner's Manual

2500/3000/4000/5000 lb. Capacity, Flipaway Liftgate

⚠ WARNING

THE SUCCESS OR FAILURE OF THIS EQUIPMENT COULD VERY WELL DEPEND ON THOROUGH AND PROPER OPERATION AND MAINTENANCE OF THIS EQUIPMENT.

READ AND UNDERSTAND THE CONTENTS OF THIS MANUAL BEFORE OPERATING THE EQUIPMENT.



12-2011

GR02772

OHIO

285 Northeast Avenue
Tallmadge, OH 44278
(330) 633-9191
FAX – (330) 633-1418

Table of Contents

	Chapter
INTRODUCTION.....	
SAFETY INFORMATION.....	1
LIFTGATE TERMINOLOGY.....	2
OPERATION INSTRUCTIONS.....	3
INSPECTION.....	4
PLACEMENT OF DECALS.....	5
LUBRICATION INSTRUCTIONS.....	6
PMs & SCHEMATICS.....	7
HOW TO ORDER PARTS.....	8

INTRODUCTION

If anyone observes improper installation, improper operation, or damage, they should immediately contact a qualified person for assistance and correction. We strongly urge anyone that has any questions or doubts as to the installation, condition, use, operation, maintenance or repair of the liftgate to contact us at Waltco where we have qualified personnel that will be happy to assist you. Telephone numbers and addresses of these locations are listed in the Owner's Manual and Installation Instructions.

INSTALLATION

Waltco liftgates should only be installed by those with sufficient basic skills to understand the installation and operation of the liftgate, along with the equipment on which the liftgate is being installed. Waltco's installation instructions are not intended to give rationale for all the instructions that are given; however, it is the intent of these instructions to give the installer both the operations and what we believe to be the most desirable sequence of implementing these operations. These instructions can in no way expand into an area where they will replace a qualified person, or clear thinking and a basic knowledge that must be possessed by the installer.

It has been our experience that a knowledgeable journeyman following these instructions and observing the operation of the liftgate will have a sufficient comprehension of the liftgate to enable this person to troubleshoot and correct all normal problems that may be encountered.

Failure to follow the installation instructions, adjustments and mounting dimensions may result in improper and unsafe operation of the liftgate. Unauthorized alterations of the liftgate can cause an undesirable and dangerous condition.

OWNER'S MANUAL

The Waltco Owner's Manual is intended to act as a guide for operation and routine maintenance but is no way intended to encourage usage or repair of the liftgate by those who are not qualified to do so.

The contents of the owner's manual include, but are not limited to general operation instructions, routine lubrication, parts lists, and an outline of things that should be checked but may not be obvious to those not technically qualified. This manual assumes the liftgate is properly installed, undamaged and operates correctly. Improper installation, improper operation, or damage should be immediately corrected by a qualified person.

INSPECTION

As part of the regular inspection of a liftgate and after damage or suspicion of an overload, inspect for wear or structural damage and make necessary repairs or replacements. Check all structural components and their attachment to the liftgate for cracked welds, loose fasteners, wear and part deformation. Check cylinder and hose for leaks. Inspections and repairs should be made by a qualified mechanic.

REPLACEMENT PARTS

Use only Waltco original equipment replacement parts. Components of other liftgate manufacturers may outwardly appear to be the same but are not interchangeable with Waltco products. Waltco components are specifically designed for safety requirements, reliability and compatibility with our products. Refer to your Waltco parts manual when ordering parts. NOTE: When ordering, give model and serial number of liftgate.

DECALS

It is important that every vehicle that has a WALTCO Liftgate have legible DECALS clearly posted on the vehicle and an OWNER'S MANUAL in the vehicle at all times as a guide for proper operation and maintenance.

Additional DECALS and OWNER'S MANUALS can be obtained from WALTCO TRUCK EQUIPMENT COMPANY

80101388 Rev 02 EO 6156

Chapter 1 Safety Information

WARNING

Read, understand, and follow all of the warning listed below.

Failure to follow these warning could result in severe personal injury or death.

- Read and understand the Owner's Manual, all decals and warning on liftgate before operating liftgate.
- Do not operate liftgate without a thorough knowledge and understanding of the operation of the liftgate.
- Liftgate hazards can result in crushing or falling.
- This liftgate is designed for loading and unloading of cargo. If personnel are required to ride liftgate, observe and familiarize yourself with the liftgate operation, decals and manuals. Ensure stable footing at all times.
- Do not ride liftgate with unstable loads.
- Wheeled loads must be properly retained from rolling.
- Tall, high center of gravity loads must be retained from falling over.
- Never overload liftgate:
Load platform as close to the vehicle, and towards the middle of the platform as possible. Refer to owner's manual and capacity decal of liftgate for maximum load and load placement.
- Keep hands and feet clear of all potential pinch points.
- Never use liftgate if it makes any unusual noise, has unusual vibration, raises or lowers unevenly, or fails to operate smoothly.
- Never use liftgate if it shows any signs of structural damage such as cracked welds, bent or distorted members.
- Do not attempt any repairs unless you are qualified to do so. Care should be taken when work is performed on a disabled liftgate located near moving traffic. When possible the vehicle should be moved away from traffic areas for repair. Precautionary measures should be taken to ensure personal safety including those recommended in Federal Motor Vehicle Safety Standards 571.125.
- When welding to liftgate, or liftgate components, take all necessary safety precautions, including using respiratory protection and other pertinent personal protective gear when welding harmful materials.
- All protective covers, guards, and safety devices must be in place and access doors closed before operating liftgate.
- Do not allow anyone to stand in, or near area, in which Platform will open and close before opening or closing Platform.
- Do not allow anyone to stand near the Platform where a falling load could land on them.
- Platform is always to be properly stored and secured for transit. See the Owner's Manual for details.
- Take care to retain cargo during transit for liftgate Platforms which function as the tailgate or door of the cargo area. Small objects can fall through the space between the vehicle and the folded Platform.
- A Lock-Out device or Shut-Off Switch should always be used to prevent unauthorized use of liftgate.
- For liftgates with Runners, never use liftgate if Runners do not travel freely and smoothly.
- For liftgates with Roller Lifting Chain, the Chain should be replaced every (5) five years or 15,000 cycles, whichever comes first. Replace only with Waltco approved Roller Chain.
- Never transfer loads which exceed lifting capacity on or over any part of the Platform unless the liftgate is equipped with a special reinforced Platform and Platform Support Bars for use when the Platform is used as loading ramp (dock board). Refer to the "Using Platform as a loading ramp" Chapter in the Operation Instructions of the BZ/RZ series Owner's Manual.
- For liftgates equipped with Trailer Hitches, never exceed the rated capacity of the hitch. Do not exceed the vehicle's weight rating. Refer to the vehicle's Owner's Manual.
- Vehicle must comply with all state and federal standards.
- Follow the "Maintenance Guide" chapter in the Owner's Manual.

Chapter 1 Safety Information

Liftgates with Tilt Function

- Proper use of the Control Switches is of extreme importance.
- Improper use of Tilt Switch could cause load to fall from the Platform or damage the liftgate.
- Platform should be in a generally horizontal position when raising or lowering with a load.
- In any tilt position, the Platform may vary from level while raising or lowering the Platform.

Liftgates equipped with spring operated Cam Closer

- Replace Cam Release Spring every five (5) years or 15,000 cycles, whichever comes first.

RGL-Series Liftgates

- Make certain Platform Brake mechanisms are operating properly.
- The Runners are always to remain powered up against the Upstops Pins when in transit.
- Inspect Cables every three (3) months or 750 cycles, whichever comes first. Cables must be replaced if they show signs of wear, distortion, kinking or if any broken wires are visible
- Replace cables every five (5) years or 10,000 cycles, whichever comes first.



This is the safety alert symbol. This manual uses this symbol to alert you to potential personal injury hazards.

Obey all safety messages that follow this symbol to avoid personal injury or death.

SIGNAL WORDS

WARNING

Indicates a potentially hazardous situation, which if not avoided, could result in death or serious injury.

Black letters on an orange background

CAUTION

Indicates a potentially hazardous situation, which if not avoided, may result in minor or moderate injury. May also be used to alert against unsafe practices.

Black letters on a yellow background.

NOTICE

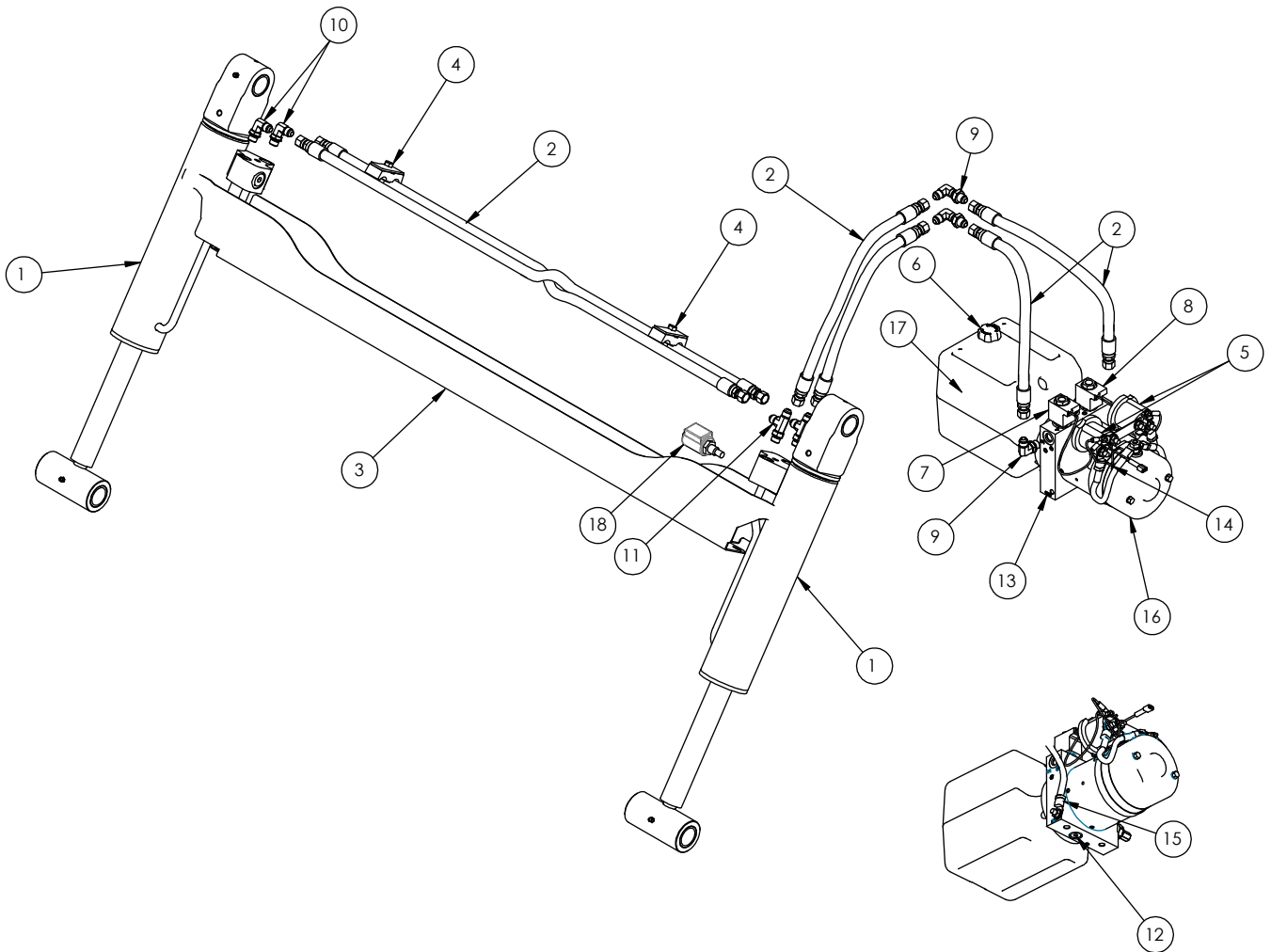
Indicates a potentially hazardous situation, which if not avoided, may result in property damage.



Chapter 2 Liftgate Terminology

1. Hydraulic Cylinder
2. Hose Assembly
3. Hose Guard
4. Dual Hose Clamp
5. Pump Unit Starter Solenoid
6. Breather Cap
7. Lowering Valve Coil
8. Raise Valve Coil
9. Bulkhead Elbow, 90 Deg.

10. 90 Deg. Hose Fitting
11. Tee, Hose Fitting
12. Drain Plug
13. Pump
14. Thermal Switch (Inside Motor)
15. Ground Cable
16. Pump Unit Motor
17. Pump Unit Reservoir
18. Lock Valve

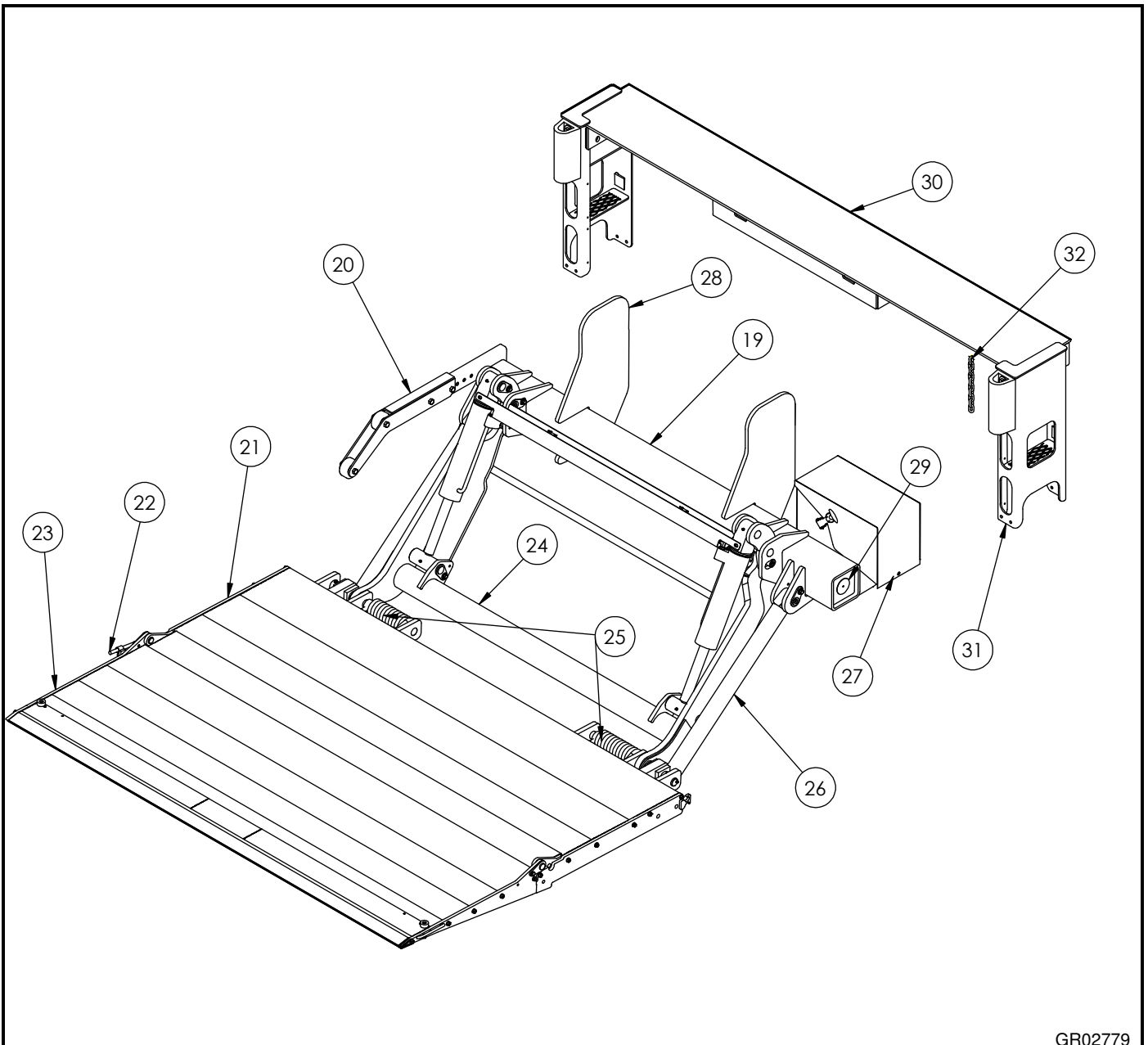


GR02778

Chapter 2 Liftgate Terminology

- 19. Mount Tube Assembly
- 20. Parting Bar Assembly
- 21. Deck Assembly
- 22. Torsion Bar
- 23. Deck Extension Assembly
- 24. Lift Arm Assembly
- 25. Folding Assist Springs
- 26. Parallel Arm

- 27. Pump Box
- 28. Mount Plate
- 29. Spec Tag
- 30. Bed Extension
- 31. Dock Bumper
- 32. Transit Chain



GR02779

Chapter 2 Liftgate Terminology

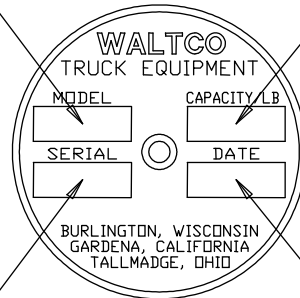
Explanation of Specification Tag

Model Name	Description	Capacity
HLF	Twin Cylinder	2500 lb.
HLF	Twin Cylinder	3000 lb.
HLF	Twin Cylinder	4000 lb.
HLF	Twin Cylinder	5000 lb.

MODEL NAME

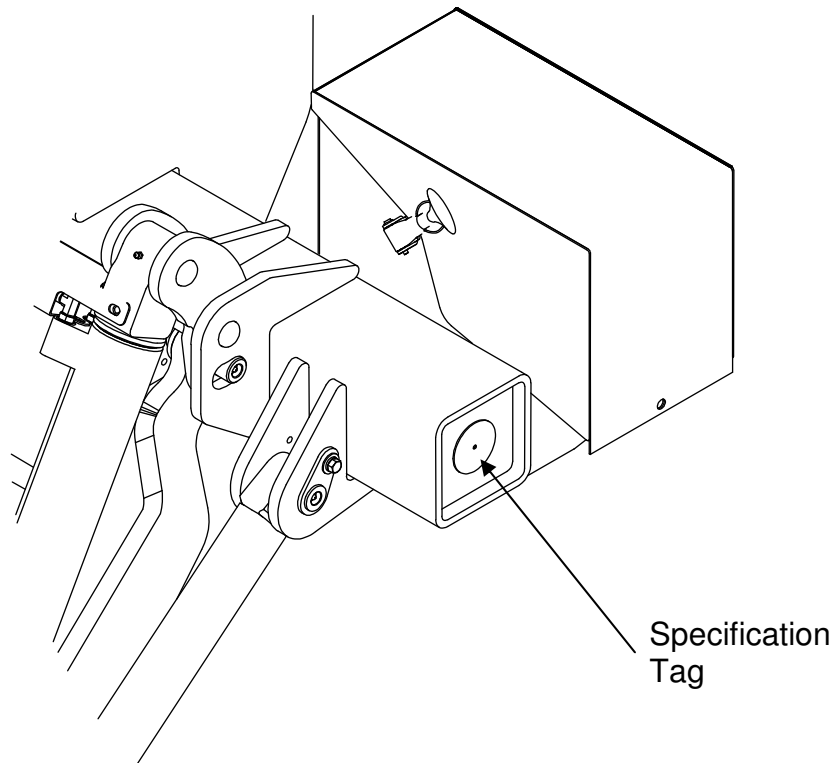
RATED CAPACITY
Based on an evenly distributed load on the platform flat surface.

SERIAL NUMBER
of liftgate. To be used when ordering parts or when contacting Waltco for service or warranty questions



DATE OF MANUFACTURE
Month / Year

GR00241



GR02837

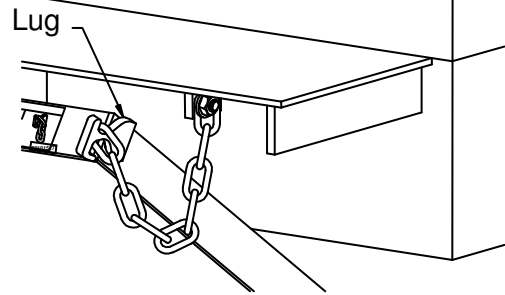
Chapter 3 Operations Instructions

TO OPEN PLATFORM

Rotate and remove transit chain off of transit chain lug.



**Never force Latch Chain if platform weight is on chain.
To slacken chain, push Raise Switch.**

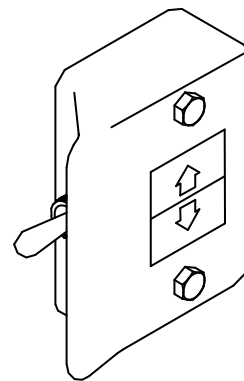


GR02567

TO OPERATE LIFTGATE

Use Raise and Lower Toggle Switch to raise and lower platform.

Load platform as close to vehicle and towards middle of platform as possible. Maximum rated capacity is based on an evenly distributed load on platform flat surface.



GR02680

TO STORE LIFTGATE FOR TRANSIT

Lower platform to ground.

Fold platform.

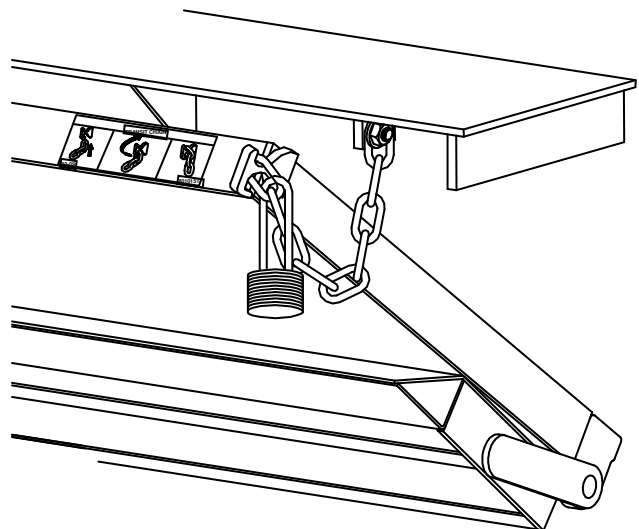
Raise platform to transit position.

Power platform snugly to underside of bed extension.

Hook transit chain onto chain lug.



**To prevent unauthorized use of liftgate,
insert a heavy gauge pad lock into first link
of latch chain.**



GR02568

Chapter 4 Preventive Maintenance

Waltco recommends that the HLF-Series liftgate be inspected at 6 month or 3000 cycle intervals to help assure proper function and operation of the liftgate.

Note: Photocopy the following PM Checklist to help keep track of periodic maintenance on the liftgate. Keep completed form with maintenance records.

For more detailed instructions on the following checklist items, refer to the appropriate sections in this Owner's Manual.



Do not continue to use liftgate if any points of inspection listed at left, or below, may cause you to think the liftgate is unsafe. Repair immediately.

If liftgate is found to be in need of repair or adjustment not covered in this manual, contact your nearest Waltco Distributor.

WALTCO HLF-SERIES LIFTGATE PREVENTIVE MAINTENANCE CHECKLIST

PM Interval: 6 Months or 3000 Cycles Date: _____ Vehicle No. _____

Mechanic: _____ Liftgate S/N: _____ Model: _____

Check appropriate box below for each step:

6 Month Liftgate PM Procedures

1	OK	Repair Required	Corrected	Check for apparent damage to the lifting structure, such as bent or distorted members or cracked welds, which may have resulted from overloading or abuse.
2	OK	Repair Required	Corrected	Check that all pins, bolts and fasteners are tight and secure.
3	OK	Repair Required	Corrected	Check for worn or damaged bearings.
4	OK	Repair Required	Corrected	Check that controls operate properly.
5	OK	Repair Required	Corrected	Check all battery cables and connections (both positive and ground cables) to be sure they are tight and free of corrosion.
6	OK	Repair Required	Corrected	Check that transit chain properly hooks onto transit chain lug.
7	OK	Repair Required	Corrected	Check operation of lockout device.
8	OK	Repair Required	Corrected	Check fold over assist spring and related hardware.
9	OK	Repair Required	Corrected	Check platform tilt is adjusted correctly.
10	OK	Repair Required	Corrected	Check for hydraulic leaks in hydraulic cylinder(s), hoses, fittings, and valves.
11	OK	Repair Required	Corrected	Check oil level in reservoir.
12	OK	Repair Required	Corrected	Check lowering speed of platform.
13	OK	Repair Required	Corrected	Check that all decals are in place and legible.
14	OK	Repair Required	Corrected	Lubricate the liftgate per the "Lubrication Instructions".

12 Month Liftgate PM Procedures (Includes steps 1-14 above)

15	OK	Repair Required	Corrected	Inspect Pump Motor for wear or damage.
16	OK	Repair Required	Corrected	Replace Hydraulic Fluid.

Chapter 4 Preventive Maintenance

MONTHLY INSPECTION

Operate the liftgate throughout its entire operational cycle. Check for:

- Damage to lifting structure such as bent or distorted members or cracked welds.
- Bent or distorted cylinder pins or damaged cylinder.
- All pivot and cylinder pins are securely in place, undamaged and retained by their proper fasteners (refer to parts drawings in chapter 7, “PMs and Schematics”).
- Damaged or worn bearings that pivot and cylinder pins rest in.
- Controls operate correctly (refer to chapter 3, “Operations Instructions”).
- Check all power cables, ground cables, and connections.
- Clean and tighten all loose connections. Replace any damaged or corroded wires or connectors.

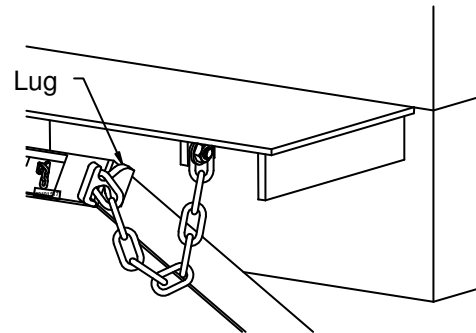


Do not continue to use liftgate if any points of inspection listed at left, or below, may cause you to think the liftgate is unsafe. Repair immediately.

If liftgate is found to be in need of repair or adjustment not covered in this manual, contact your nearest Waltco Distributor.

Inspect transit chain.

Chain must hook on lug freely.



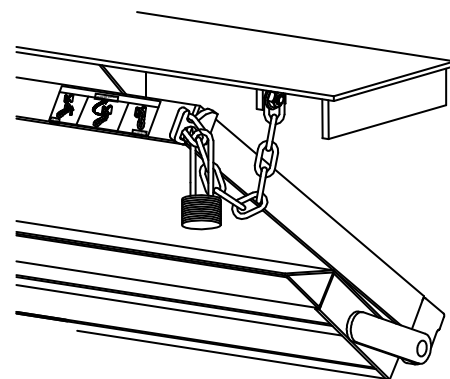
GR02567

Check proper operation of lockout device.

Hook transit chain unto transit chain lug and insert a heavy gauge padlock into the last chain link to ensure chain cannot be removed from lug.



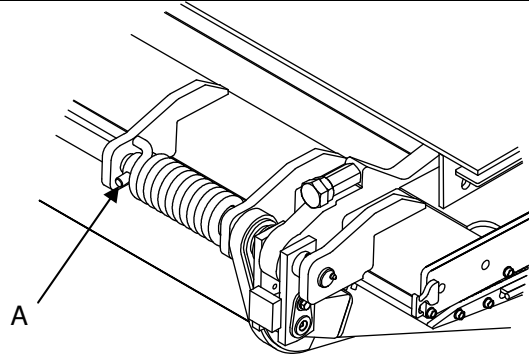
To prevent unauthorized use of liftgate, use a heavy gauge pad lock as shown.



GR02568

Chapter 4 Preventive Maintenance

Inspect fold over assist spring and related hardware. Check that bolt (A) contacts and holds torsion spring when platform is unfolded open. Inspect both sides.



GR02795

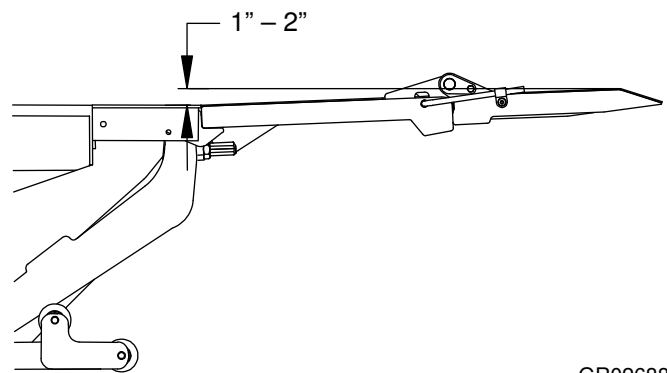
CHECK PLATFORM TILT

Raise Platform to bed level and inspect.

Trailing edge of platform should be approximately 1" - 2" above bed extension

Carefully inspect all liftgate components for wear or damage.

Replace any damaged or worn components before proceeding.



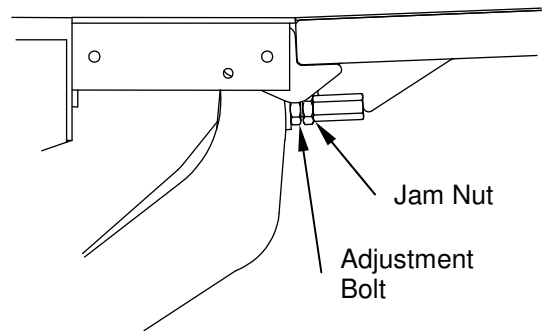
GR02688

Platform tilt adjustment

If Platform is sagging, adjust bolts between Stop Block and Platform Hinge to achieve 1" - 2" dimension above.

NOTE:

Adjust both Stop Block Bolts evenly.
Tighten Jam Nuts.

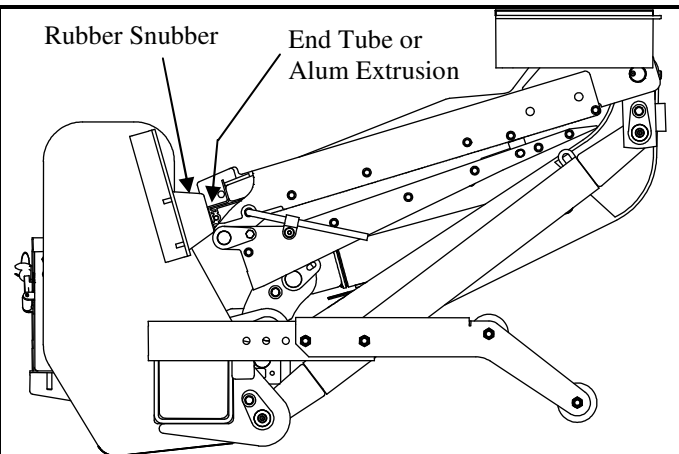


GR02689

CHECK RUBBER SNUBBERS

Raise platform to fully closed position. Pull and/or push on deck extension to verify it is held tight.

Platform end tube or aluminum extrusion should compress rubber snubber. If not, add shims or large washers under snubber pads to obtain this compression.



GR02796

Chapter 4 Preventive Maintenance

HYDRAULICS

Inspect for oil leaks in:

Hydraulic cylinder(s)

Hydraulic hoses - Replace hoses if they show signs of excessive abrasion

Hydraulic fittings and valves

Tighten or replace all hydraulic components as may be required to stop oil leakage

CHECK AND FILL HYDRAULIC RESERVOIR

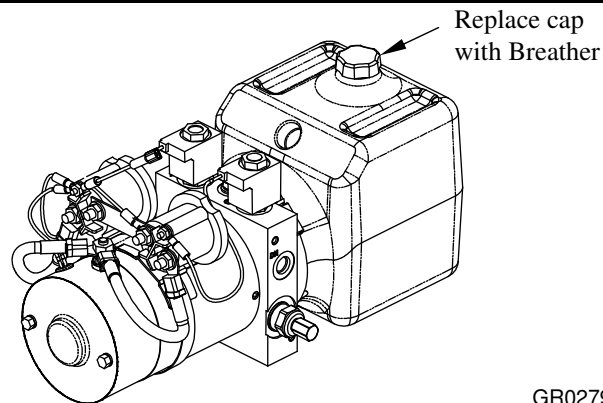
Position liftgate deck in raised position.

Remove Reservoir Breather.

Oil level should be 1/2" from top of reservoir.

If low, fill as required. Use appropriate fluid per chart.

Replace breather.



GR02792

Recommended Fluids

Temperature Range	Acceptable Fluids
0° to 120° F	Waltco Biodegradable Liftlube™ part #85803860 Shell Tellus S2 V 32 Chevron AW32
-20° to 90° F	Waltco Biodegradable LiftLube Arctic part #85803866 Shell Tellus S2 V 15 Mobil DTE 13 MIL – H - 5606

A good quality SAE 10W motor oil may also be used in temperatures above 32° F.

Fill reservoir

- Fill with recommended fluid or equivalent.
- Fill the reservoir to within 1/2" from the top.
- Fluids are available from the Waltco parts Dept. 1-800-411-5685 www.waltco.com

NOTE:

Do not use the following fluids:

Brake Fluid

Power steering fluid

Automatic Transmission Fluid (ATF)

Chapter 4 Preventive Maintenance

There is no speed adjustment on this liftgate.

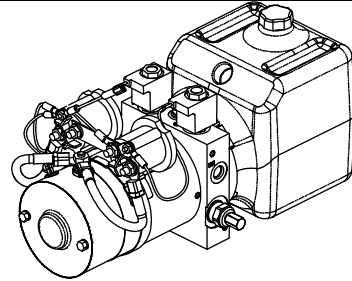
Lowering speed is controlled by the pressure compensative valve plumbed into the pump.

Regardless of weight on platform, liftgate should lower at approximately six (6) inches per second.

$$\frac{\text{Bed Height (inches)}}{6} = \text{Lowering Time (seconds)}$$



This liftgate must have the pressure compensative valve installed in the pump.



Pressure Compensative Flow Control Valve inside Pump

GR02792

INSPECT DECALS AND LUBRICATE LIFTGATE

Inspect all decals per Chapter 5 of this manual.

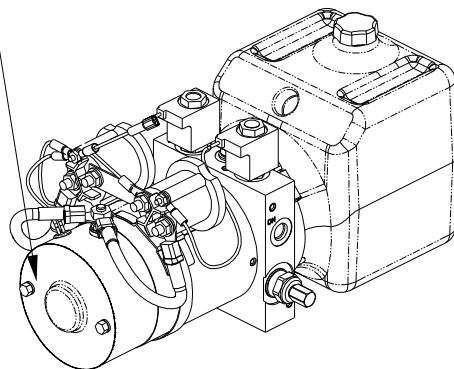
Replace any that are missing or damaged.

Lubricate liftgate per Chapter 6 of this manual.

SEMI ANNUAL INSPECTION

- Inspect power motor:
- Disconnect battery cable.
- Remove end cover.
- Examine armature brushes for wear (Motor should be replaced if less than 1/8" long).
- Clean out all residue from inside of motor housing.
- Apply several drops of light weight machine oil to armature shaft bearing in motor end cover.
- Reassemble motor.

Remove cover to check brushes and clean out motor

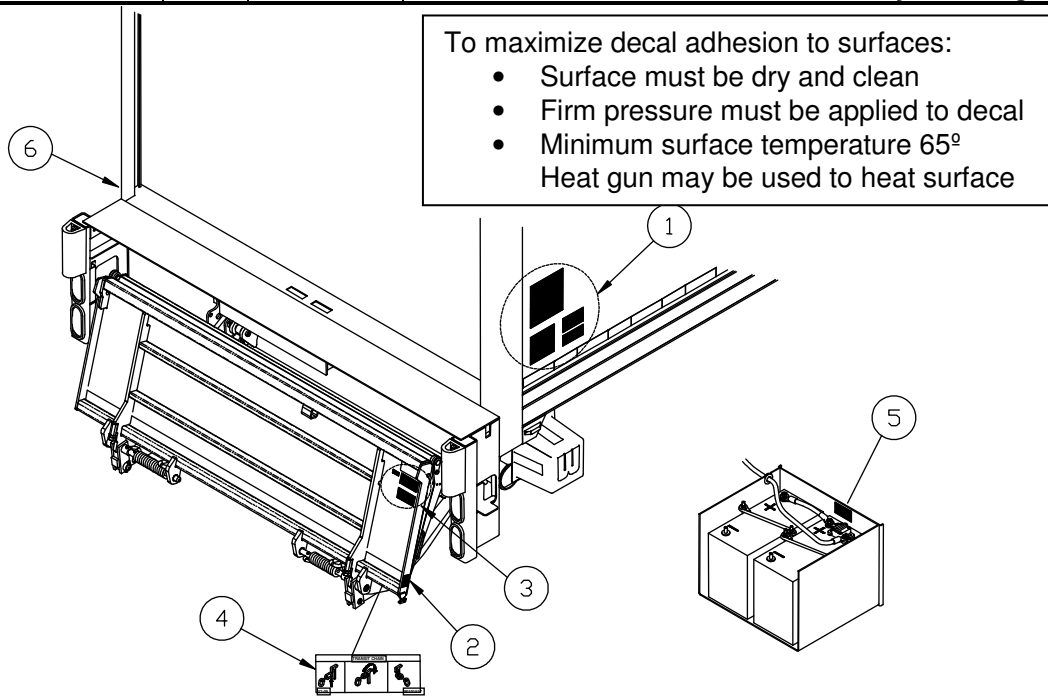


GR02792

Chapter 5 Placement of Decals

⚠ All decals must be in place and legible or all warranties are void.

ITEM	DECAL	QTY	PART NO.	LOCATION
1	Safety Instructions	1	80100850	Locate in a conspicuous place near controls. ⚠ If your liftgate is equipped with dual controls, an additional Safety Instruction decal (80100850) is to be placed in a conspicuous place near the second set of controls. Refer to the following diagram showing decal locations.
	Operation	1	80101528	
	Hazard Decal	1	80101370	
	Important Decal	1	80100828	
	Motor Thermal Switch	1	80101480	
	Stand Clear Decal	1	75089296	
2	Capacity Decal-2500lb	1	80100255	Locate on curbside of platform (Position so as to be read when platform is open)
	Capacity Decal-3000lb	1	80100257	
	Capacity Decal-4000lb	1	80100260	
	Capacity Decal-5000lb	1	80100263	
3	Use Handle Decal	1	75089295	Locate near platform handle (Positioned so as to be read when platform is being unfolded into loading position)
	Stand Clear Decal	1	75089296	
	Capacity Decal-2500lb	1	80100255	
	Capacity Decal-3000lb	1	80100257	
	Capacity Decal-4000lb	1	80100260	
	Capacity Decal-5000lb	1	80100263	
4	Transit Latch Decal	1	80101334	Locate on back of deck on curb side (visible when platform is stored)
5	Circuit Breaker Decal	1	80100829	Locate next to liftgate circuit breaker. In applications where more than one circuit breaker is used, this decal must be placed in both locations
6	Stand Clear Decal	1	75089296	Locate on driver's side of vehicle body near liftgate



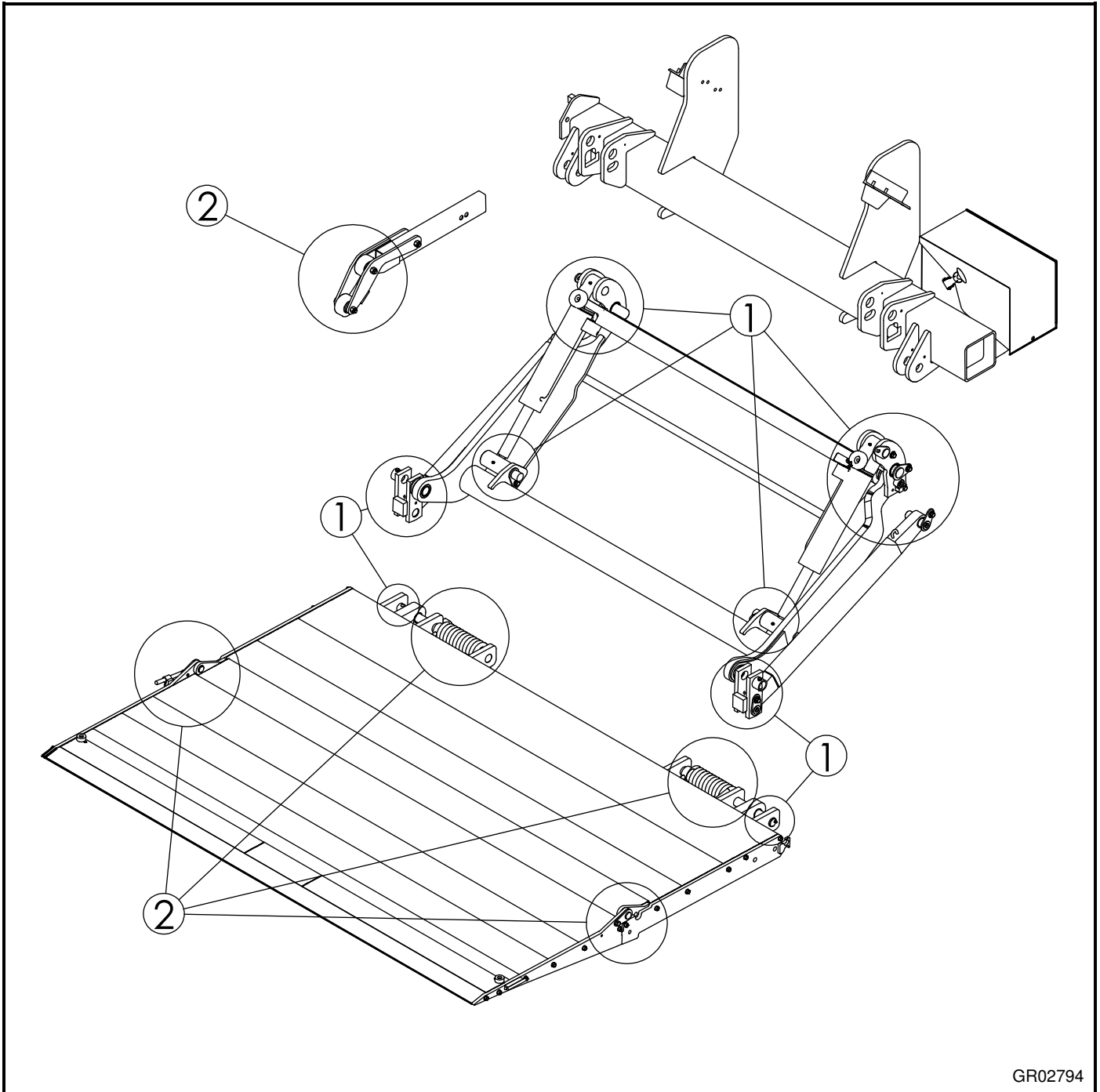
GR02655

Chapter 6 Lubrication Instructions

The liftgate should be lubricated every 120 days.

#1 – Grease all grease fittings in pins and cylinders with grease gun.

#2 - Oil with a light weight machine oil (do not use on bearings in platform).



GR02794

Ch. 7 PARTS MANUAL SHEETS

	PM Number
MOUNT FRAME ASSEMBLY, 2500 & 3000 LB CAPACITY	PM-838
MOUNT FRAME ASSEMBLY, 4000 & 5000 LB CAPACITY	PM-792
PLATFORM ASSEMBLY, 2500 & 3000 LB CAPACITY	PM-839
PLATFORM ASSEMBLY, 4000 & 5000 LB CAPACITY	PM-793
BED EXTENSION	PM-794
HYDRAULIC LAYOUT.....	PM-795
ELECTRIC CONTROL OPTIONS.....	PM-796

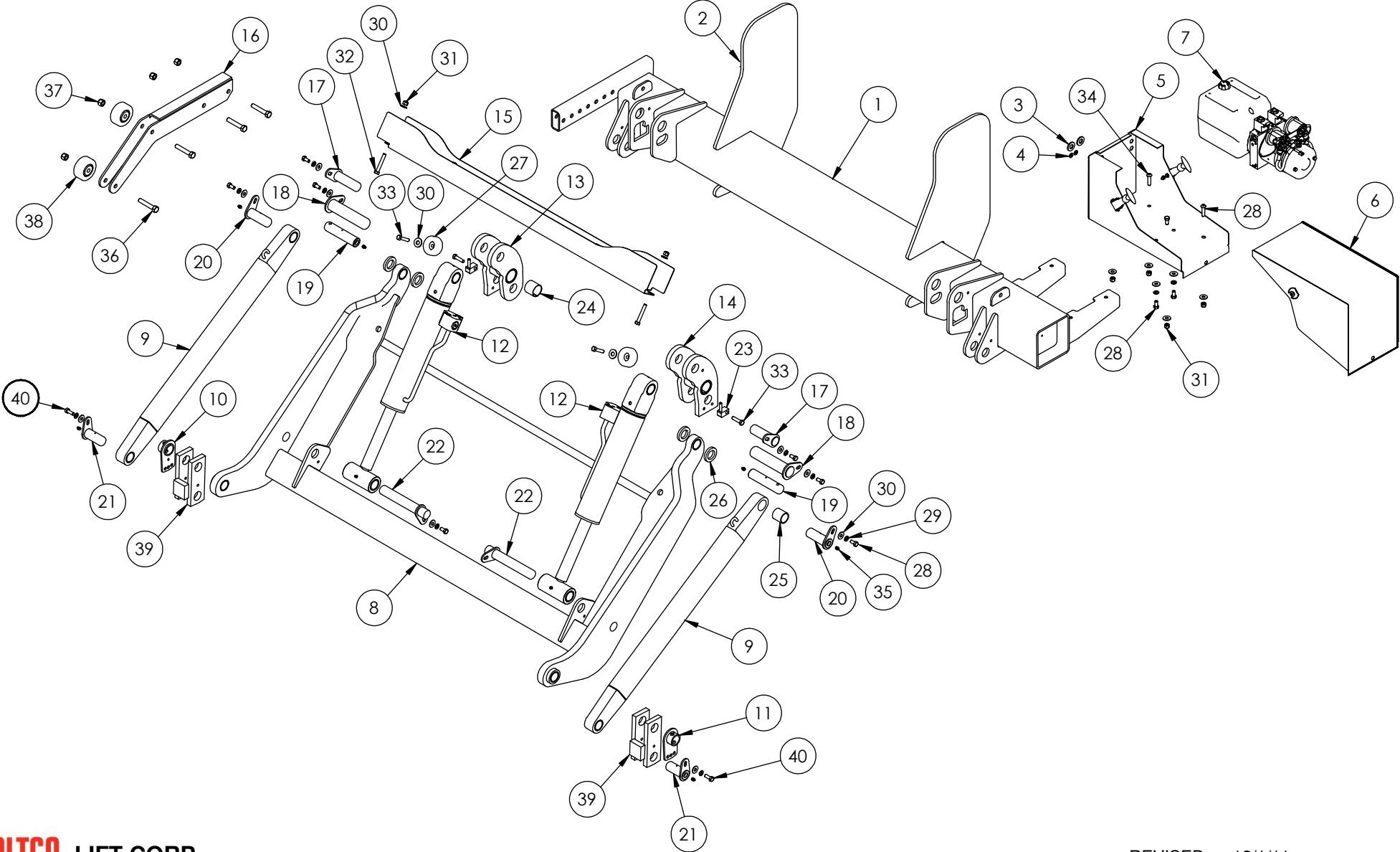
ITEM	PART NUMBER	QTY	DESCRIPTION
1	22720015	1	Mount Frame Assembly, 3000#
2	22770302	2	Mount Plate, 2500# & 3000#
3	75089313	2	Grommet, 1/2" ID
4	75089322	2	Grommet, 5/16" ID
5	22795001	1	Pump Enclosure Weldment
6	22793001	1	Pump Enclosure Lid
7	70430610	1	Hydraulic Pump, HLF-25 & 30
8	22730016	1	Lift Arm Weldment
	22730018		Lift Arm Weldment, Under-Ride
	22730015		Lift Arm Weldment, Hitch & Dock Lock
	22730017		Lift Arm Weldment, Hitch & Dock Lock, Under-Ride
9	22755010	2	Parallel Arm Weldment
10	22750551	1	Stop Block Adjust, DS
11	22750501	1	Stop Block Adjust, CS
12	22780060	2	Hydraulic Cylinder, HLF-25, 30, & 40
13	22724001	1	Auto Tilt Block, DS
14	22724002	1	Auto Tilt Block, CS
15	22718501	1	Hose Guard
16	22793501	1	Parting Bar Weldment
17	1000021-08 ^B	2	Pin, 1-1/4" x 3-5/8"
18	1000021-13 ^B	2	Pin, 1-1/2" x 6-3/16"
19	22712301 ^B	2	Pin, Lift Arm Pivot
20	1000022-05 ^B	2	Pin, 1-1/4" x 3-3/16"
21	1000022-03 ^B	2	Pin, 1-1/4" x 2-5/8"
22	1000021-11 ^B	2	Pin, 1-1/4" x 6-11/16"
23	22735001	2	Pin Retaining Block
24	42668119 ^A	4	Bearing, Fiberglide, 1-1/2" ID x 1-1/2"
25	10010192 ^A	10	Bearing, 1-1/2" ID x 1-1/2"
26	22714102	4	Spacer
27	22714201	2	Puck
28	75086055 ^B	10	Hex Bolt, 3/8-16 x 3/4"
29	75088081 ^B	14	Lock Washer, 3/8"
30	75088053 ^B	16	Washer, 3/8"
31	75085193	6	Lock Nut, 3/8-16

ITEM	PART NUMBER	QTY	DESCRIPTION
32	7500010-26	2	Hex Bolt, 3/8-16 x 2-1/2"
33	75086218	4	Hex Bolt, 3/8-16 x 1-1/4", Gr 8
34	75086872	4	Socket Button Head, 3/8-16 x 1-1/4"
35	75089307	6	Grease Zerk, 5/16"
36	7500010-14	4	Hex Bolt, 3/8-16 x 2-3/4"
37	75085162	4	Top Lock Nut, 3/8-16
38	75081348	2	Roller, Plastic
39	22750010	2	Stop Block, 4-1/2" Spacing
40	7500010-6	2	Hex Bolt, 3/8-16 x 1", Gr 8

^A Included in Bearing Replacement Kit 80001314

^B Included in Pin Replacement Kit 80001315

MOUNT FRAME ASSEMBLY, 2500 & 3000 LBS CAPACITY



WALTCO LIFT CORP.
HLF-25 & 30

REVISED: 12/1/11
E.O. 6708
REV. 01

PM-838

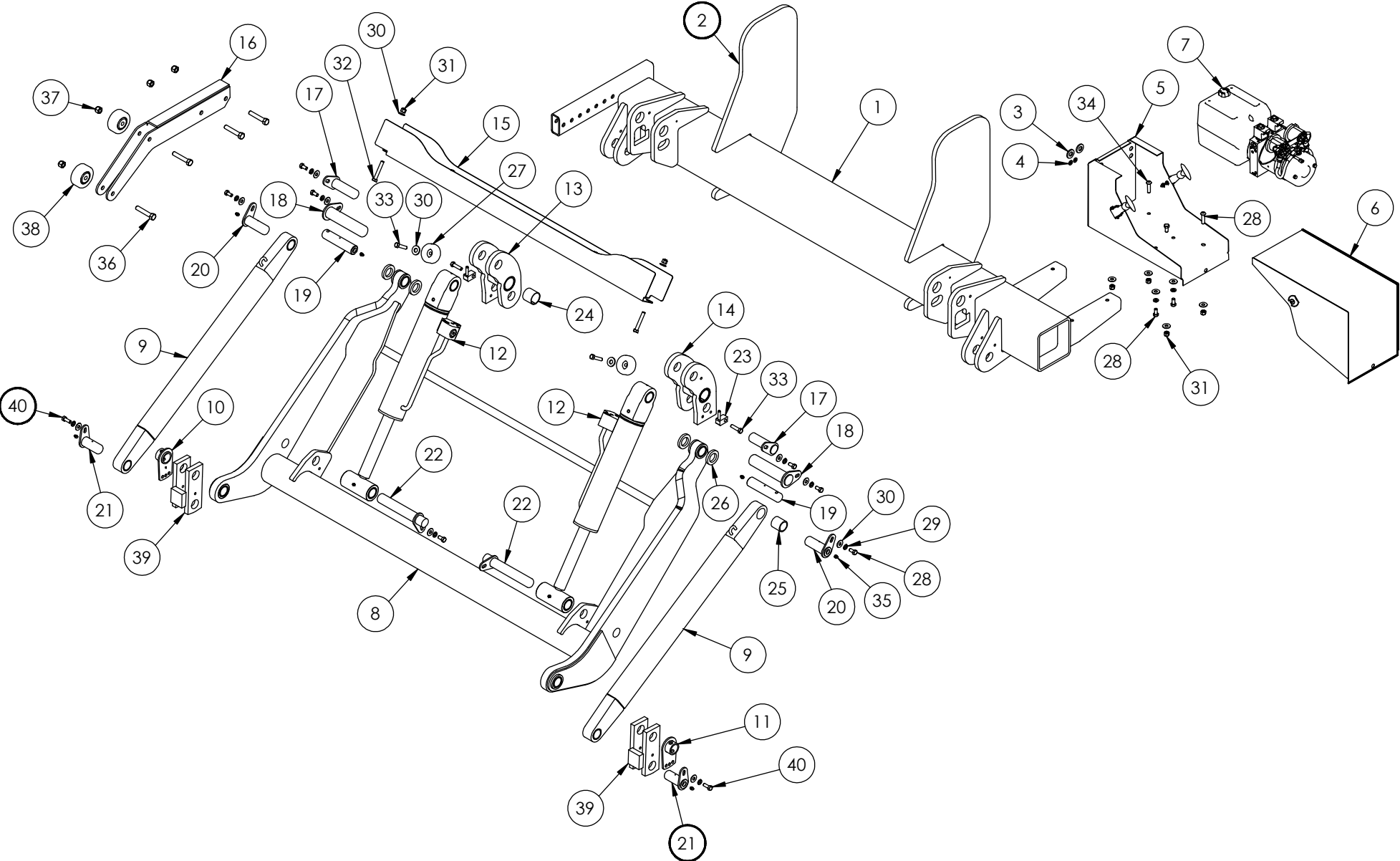
ITEM	PART NUMBER	QTY	DESCRIPTION
1	22720010	1	Mount Frame Assembly
2	22770301	2	Mount Plate, 4000# & 5000#
3	75089313	2	Grommet, 1/2" ID
4	75089322	2	Grommet, 5/16" ID
5	22795001	1	Pump Enclosure Weldment
6	22793001	1	Pump Enclosure Lid
7	70430620		Hydraulic Pump, HLF-40 & 50
8	22730003	1	Lift Arm Weldment
	22730004		Lift Arm Weldment, Under-Ride
9	22755010	2	Parallel Arm Weldment
10	22750551	1	Stop Block Adjust, DS
11	22750501	1	Stop Block Adjust, CS
12	22780060	2	Hydraulic Cylinder, HLF-25, 30, & 40
	22780050		Hydraulic Cylinder, HLF-50
13	22724001	1	Auto Tilt Block, DS
14	22724002	1	Auto Tilt Block, CS
15	22718501	1	Hose Guard
16	22793501	1	Parting Bar Weldment
17	1000021-08 ^B	2	Pin, 1-1/4" x 3-5/8"
18	1000021-13 ^B	2	Pin, 1-1/2" x 6-3/16"
19	22712301 ^B	2	Pin, Lift Arm Pivot
20	1000022-05 ^B	2	Pin, 1-1/4" x 3-3/16"
21	1000022-03 ^B	2	Pin, 1-1/4" x 2-5/8"
22	1000021-11 ^B	2	Pin, 1-1/4" x 6-11/16"
23	22735001	2	Pin Retaining Block
24	42668119 ^A	4	Bearing, Fiberglide, 1-1/2" ID x 1-1/2"
25	10010192 ^A	10	Bearing, 1-1/2" ID x 1-1/2"
26	22714101	4	Spacer
27	22714201	2	Puck
28	75086055 ^B	10	Hex Bolt, 3/8-16 x 3/4"
29	75088081 ^B	14	Lock Washer, 3/8"
30	75088053 ^B	16	Washer, 3/8"
31	75085193	6	Lock Nut, 3/8-16
32	7500010-26	2	Hex Bolt, 3/8-16 x 2-1/2"
33	75086218	4	Hex Bolt, 3/8-16 x 1-1/4", Gr 8

ITEM	PART NUMBER	QTY	DESCRIPTION
34	75086872	4	Socket Button Head, 3/8-16 x 1-1/4"
35	75089307	6	Grease Zerk, 5/16"
36	7500010-14	4	Hex Bolt, 3/8-16 x 2-3/4"
37	75085162	4	Top Lock Nut, 3/8-16
38	75081348	2	Roller, Plastic
39	22750010	2	Stop Block, 4-1/2" Spacing
40	7500010-6	2	Hex Bolt, 3/8-16 x 1"

^A Included in Bearing Replacement Kit 80001314

^B Included in Pin Replacement Kit 80001315

MOUNT FRAME ASSEMBLY, 4000 & 5000 LBS CAPACITY



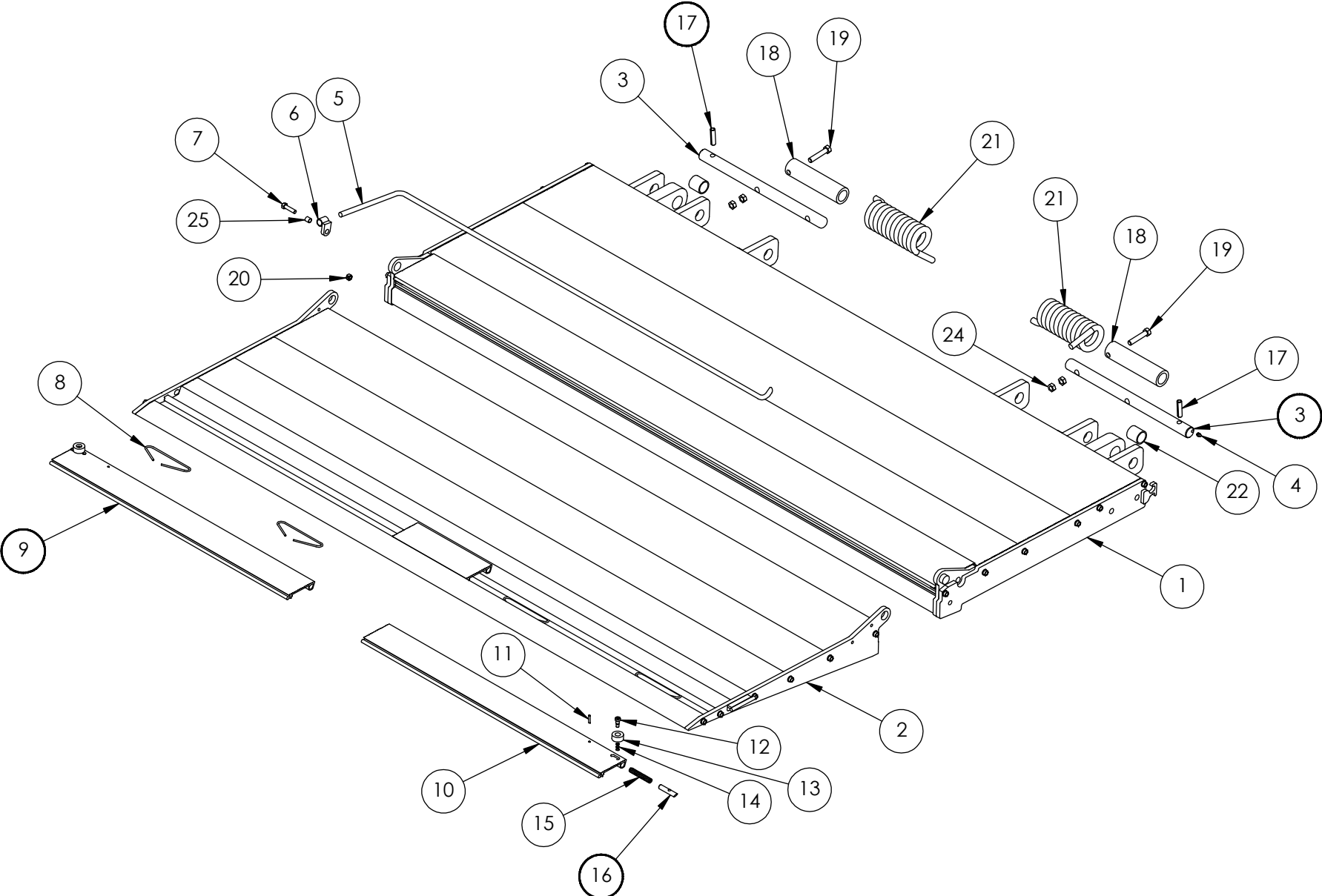
ITEM	PART NUMBER	QTY	DESCRIPTION
1	22711015	1	Deck Assembly
2	22713015	1	Deck Extension Assembly, w/ Cart Stop
	22713016		Deck Extension Assembly
3	22712001 ^B	2	Pin Assembly, Deck (with grease zerk)
4	75089307 ^B	2	Grease Zerk, 5/16"
5	26417701	1	Torsion Bar
6	26417301	1	Torsion Bar Anchor
7	75086219	1	Hex Bolt, 3/8-16 x 1-1/2", Gr 8
8	42668440	4	Spring, Cart Stop
9	26414801 ^A	1	Cart Stop Assembly Complete, Curbside
	26414851 ^A		Cart Stop Assembly Complete, Driverside
10	42669012	1	Cart Stop, Curbside
	42669011		Cart Stop, Driverside
11	75089591	2	Spring Pin, 3/16" x 7/8"
12	7500019-4	2	Socket Head Shoulder Bolt, 3/8" x 3/8"
13	42669299	2	Roll Stop
14	42669286	6	Shim
15	75088268	2	Spring, Cart Stop
16	42669014	2	Locking Pin, Cart Stop
17	75089542 ^B	4	Coil Pin, 1/2" Dia x 2"
18	22716001	2	Spacer Tube
19	7500010-40	2	Hex Bolt, 5/8-11 x 3-1/2", Gr 8
20	75085188	1	Nut, 3/8-16, Centerlock
21	22715002	2	Spring, Platform
22	10010192 ^C	2	Bearing, 1-1/4" ID x 1-1/2"
23	22716010	2	Collar, Spring
24	7500065-2	2	Jam Nut, Top Lock, 5/8-11
25	22714501	1	Tube, SS, 1/2"OD x .402"ID x 1/2"LG

^A Included Items 10 thru 16.

^B Included in Pin Replacement Kit 80001315.

^C Included in Bearing Replacement Kit 80001314.

ALUMINIUM PLATFORM ASSEMBLY



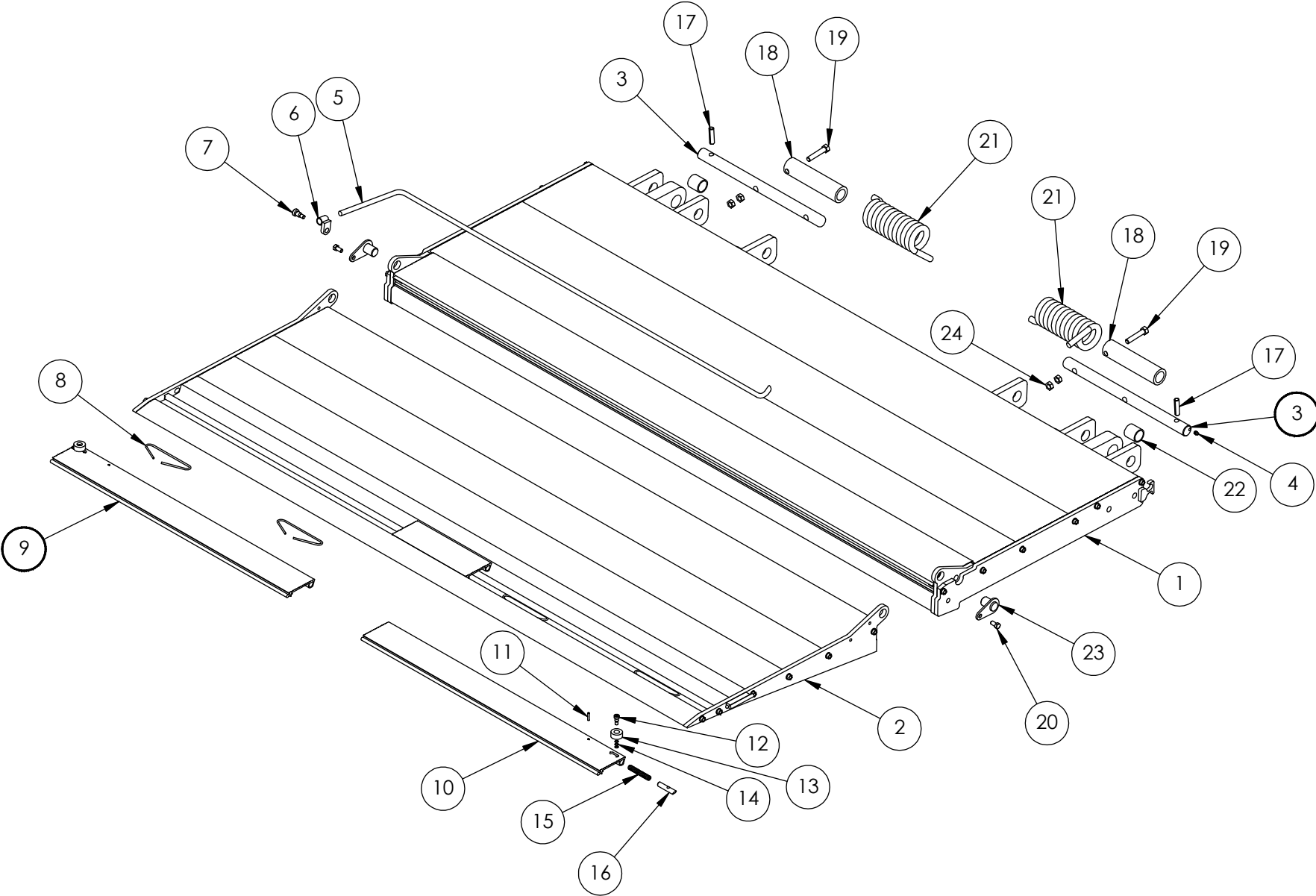
ITEM	PART NUMBER	QTY	DESCRIPTION
1	22711001	1	Deck Assembly
2	22713001	1	Deck Extension Assembly, w/ Cart Stop
	22713003		Deck Extension Assembly
3	22712001 ^B	2	Pin Assembly, Deck (with grease zerk)
4	75089307 ^B	2	Grease Zerk, 5/16"
5	26417701	1	Torsion Bar
6	26417301	1	Torsion Bar Anchor
7	7500019-3	1	Socket Head Shoulder Bolt, 1/2" x 1/2"
8	42668440	4	Spring, Cart Stop
9	26414801 ^A	1	Cart Stop Assembly Complete, Curbside
	26414851 ^A		Cart Stop Assembly Complete, Driverside
10	42669012	1	Cart Stop, Curbside
	42669011		Cart Stop, Driverside
11	75089591	2	Spring Pin, 3/16" x 7/8"
12	7500019-4	2	Socket Head Shoulder Bolt, 3/8" x 3/8"
13	42669299	2	Roll Stop
14	42669286	6	Shim
15	75088268	2	Spring, Cart Stop
16	42669014	2	Locking Pin, Cart Stop
17	75089542 ^B	4	Coil Pin, 1/2" Dia x 2"
18	22716001	2	Spacer Tube
19	7500010-40	2	Hex Bolt, 5/8-11 x 3-1/2", Gr 8
20	75086053	2	Hex Bolt, 3/8-16 x 3/4", Gr 8
21	22715002	2	Spring, Platform
22	10010192 ^C	2	Bearing, 1-1/4" ID x 1-1/2"
23	1000101-6	2	Pin Weldment
24	7500065-2	4	Jam Nut, Top Lock, 5/8-11

^A Included Items 10 thru 16.

^B Included in Pin Replacement Kit 80001315.

^C Included in Bearing Replacement Kit 80001314.

ALUMINIUM PLATFORM ASSEMBLY



ITEM	PART NUMBER	QTY	DESCRIPTION
1	22760001	1	Bed Extension, 96" Vehicles
	22760002		Bed Extension, 102" Vehicles
	22760003		Bed Extension, Heavy Duty, 96" Vehicles
	22760004		Bed Extension, Heavy Duty, 102" Vehicles
2	26497001 ^{ACD}	1	Dock Bumper, RH For Lights (Option)
3	26497051 ^{ACD}	1	Dock Bumper, LH For Lights (Option)
4	26497002 ^{BE}	1	Dock Bumper, RH (Option)
5	26497052 ^{BE}	1	Dock Bumper, LH (Option)
6	26498501 ^{ABCDE}	1	Stir-Up Assembly (Option)
7	26297604 ^{BE}	2	Rubber Bumper, Long (Option)
8	26297603 ^{ACD}	2	Rubber Bumper, Short (Option)
9	75088067 ^{ABCDE}	6	Washer, 1/2" (Option)
10	75088085 ^{AB}	8	Lock Washer, 5/8" (Option)
11	75086110 ^{BE}	6	Hex Bolt, 1/2"-13 x 2-1/2" Lg. (Option)
12	75086154 ^{AB}	8	Hex Bolt, 5/8"-11 x 1-3/4" Lg. (Option)
13	75088064 ^{AB}	12	Washer, 5/8" (Option)
14	26498101 ^{AB}	1	Angle Support, CS (Option)
15	26498151 ^{AB}	1	Angle Support, DS (Option)
16	26498301 ^{AB}	2	Angle, 3" x 3" x 1/4" x 24" Lg. (Option)
17	75086218 ^{ABCDE}	8	Hex Bolt, 3/8"-16 x 1-1/4" (Option)
18	75088081 ^{ABCDE}	8	Lock Washer, 3/8" (Option)
19	75088053 ^{ABCDE}	17	Washer, 3/8" (Option)
20	75085096 ^{ABCDE}	8	Hex Nut, 3/8"-16 (Option)
21	26498201 ^{ACD}	4	Light Bracket (Option)
22	75089334 ^{ACD}	2	Grommet, 1/2" ID (Option)
23	75086732 ^{ACD}	12	Round Head Screw, #10-32 (Option)
24	75085000 ^{ACD}	12	Hex Nut, #10-32 (Option)
25	22575200 ^{ACD}	2	Harness, 2 Lamps (Option)
26	75089376 ^{ACD}	4	Light Grommet (Option)
27	75089373 ^{ACD}	2	Tail Light ST & T (Option)
28	75089374 ^{AC}	2	Backup Light (Option)
29	7500010-26	1	Hex Bolt, 3/8"-16 x 2-1/2" Lg.
30	22598100	1	Transit Chain
31	75085193	1	Hex Lock Nut, 3/8"-16
32	7500010-23 ^{ACD}	4	Hex Bolt, 1/2"-13 x 3" Lg. (Option)

ITEM	PART NUMBER	QTY	DESCRIPTION
33	75085012 ^{AB}	4	Hex Nut, 5/8"-11 (Option)
34	75088083 ^{ABCDE}	6	Lock Washer, 1/2" (Option)
37	75085008	6	Hex Nut, 1/2"-13

^A Included in Dock Bumper W/4 Light Kits No. 22796004 and No. 22796005

^B Included in Dock Bumper Kit No. 22796006

^C Included in Complete Dock Bumper w/ Lights No. 26498004 (CS) and No. 26498054 (DS)

^D Included in Complete Dock Bumper w/ Trailer Lights No. 26498007 (CS) and No. 26498057 (DS)

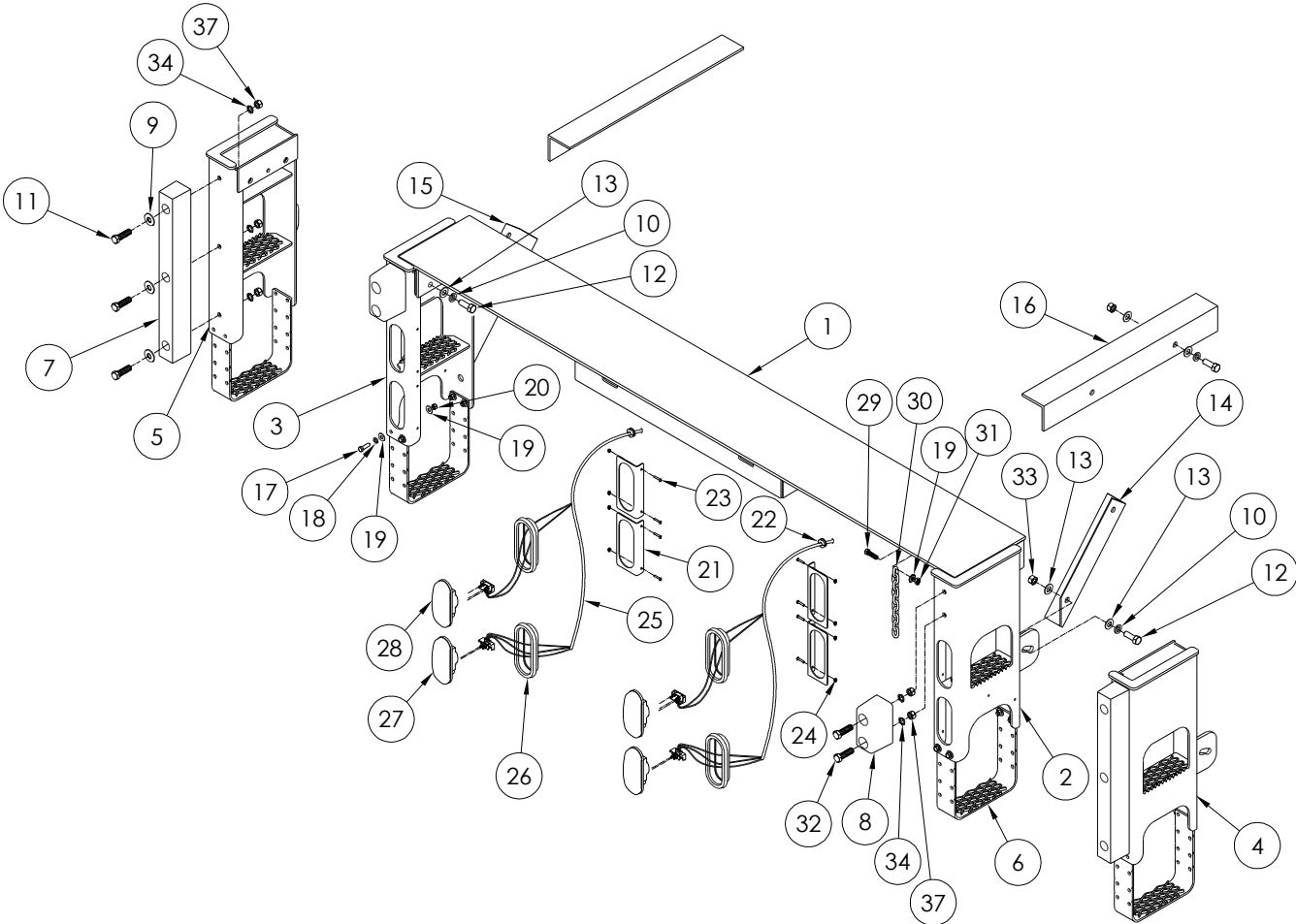
^E Included in Complete Dock Bumper w/o Lights No. 26498005 (CS) and No. 26498055 (DS)

WALTCO LIFT CORP.
HLF-25, -30, -40 & -50

REVISED: 12-2010
E.O. 6309NN
REV. 03

PM-794

BED EXTENSION AND LIGHT KIT OPTIONS



WALTCO LIFT CORP.
HLF-25, -30, -40 & -50

REVISED: 12-20-10
E.O. 6309NN
REV. 02

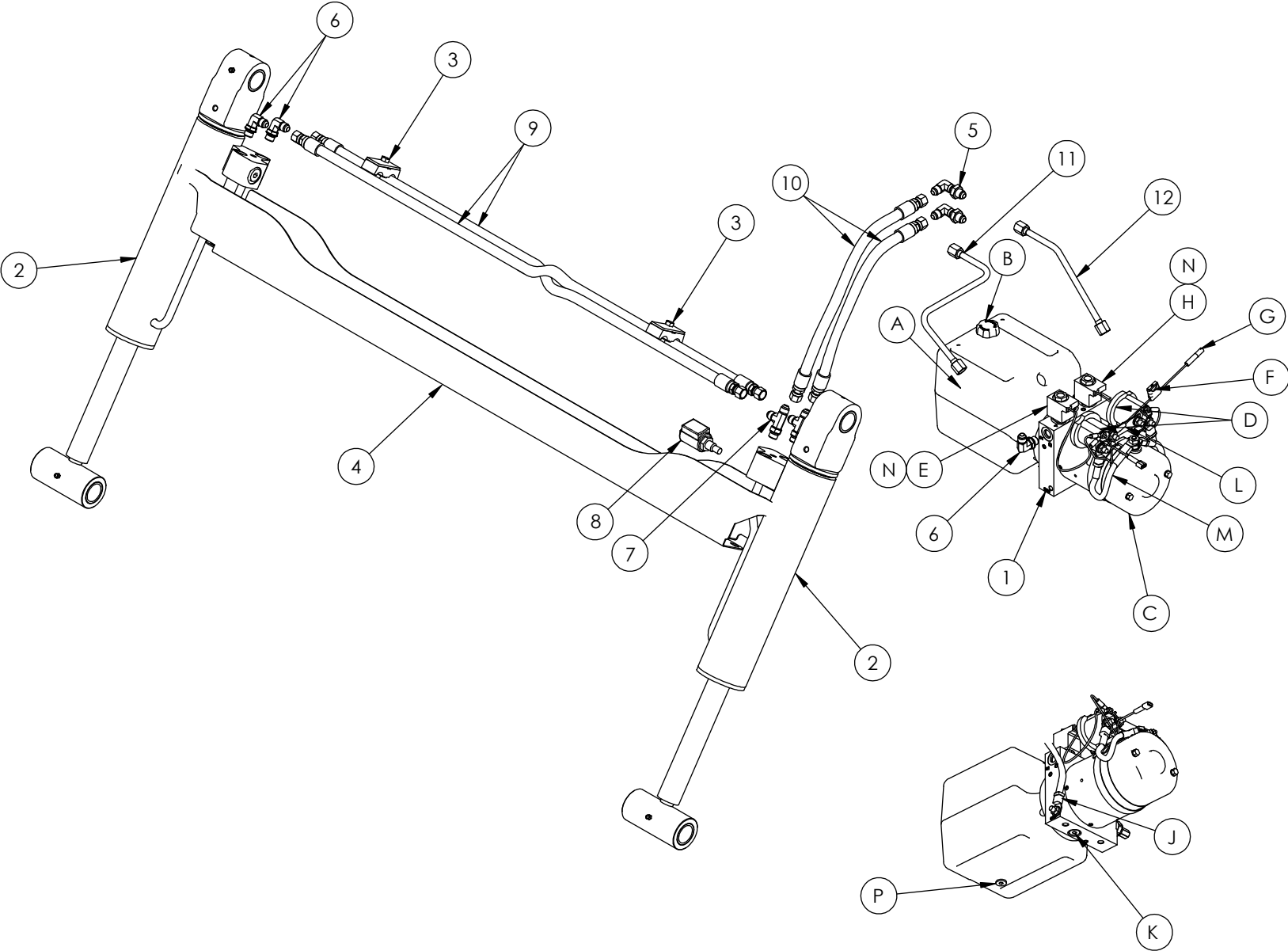
PM-794

ITEM	PART NUMBER	QTY	DESCRIPTION
1	70430610	1	Hydraulic Pump Unit, 2400 PSI, HLF-25, 30
	70430620		Hydraulic Pump Unit, 3200 PSI, HLF-40, 50
A	70401513 ^A	1	Hydraulic Reservoir
B	70400004 ^A	1	Breather
C	7043002-1 ^A	1	Motor
D	75089833 ^A	2	Starter Solenoid
E	70092503 ^A	1	Valve Assembly, 2-way, 2 pos w/ Coil
F	75089854 ^A	1	Fuse, 15 Amp
G	10099309 ^A	1	Inline Fuse Assembly (Includes Fuse 75089854)
H	70400014 ^A	1	Valve Assembly, 4-way, 2 pos w/ Coil
J	75089473 ^A	1	Ground Cable (Part of Dual Cable)
K	70091291 ^A	1	Steel Plug
L	70091779 ^A	1	Connecting Strap
M	70091778 ^A	2	Solenoid Cable
N	70402303 ^A	2	Coil, 12V, 10A
P	70401414 ^A	1	Plug, SAE O-ring, 9/16-18 Hex
2	22780060	2	Hydraulic Cylinder
	22780050		Hydraulic Cylinder
3	75089251 ^B	4	Clamp Half, Hose
	75089252 ^B	2	Cover Plate, Hose Clamp
	75089253 ^B	2	Hex Bolt, 5/16-18 x 1-3/4"
4	22718501	1	Hose Guard Assembly
5	75082894	2	Bulkhead Elbow, 90, 3/8" JIC M X 3/8" JIC M
6	75082869	4	Elbow, 90, 3/8" JIC M X 3/8" ORB M
7	75083132	2	Tee, 3/8" JIC M X 3/8" ORB M
8	22781501	1	Lock Valve
9	7500077-16	2	Hose, 3/8" ID X 3/8" JIC
10	7500077-15	2	Hose, 3/8" ID X 3/8" JIC
11	22796101	1	Hardline Hose Assembly, 3/8" JIC
12	22796201	1	Hardline Hose Assembly, 3/8" JIC

^A Included in Pump Assembly 70430610 & 70430620.

^B Included in Hose Guard Assembly 22718501.

HYDRAULIC LAYOUT



WALTCO LIFT CORP.
HLF-25, -30, -40, & -50

REVISED: 9-1-11
E.O. 6659
REV. 04

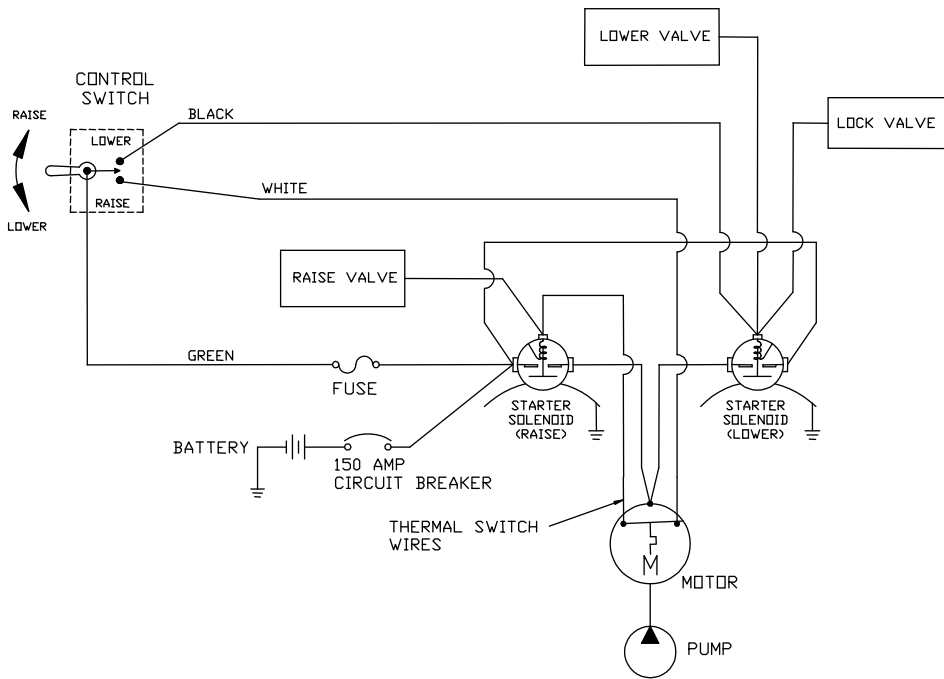
PM-795

ITEM	PART NUMBER	QTY	DESCRIPTION
1	10099331 ^{ab}	1	Switch w/15ft Cord
2	10099325 ^c	1	Switch (Hand Held Remote)
3	75082038	1	Trailer Socket
4	75089854	1	15 Amp Fuse
5	10099309	1	Fuse Holder
6	10098413	1	Dual Control Harness
7	22781000	1	Harness, Lock Valve

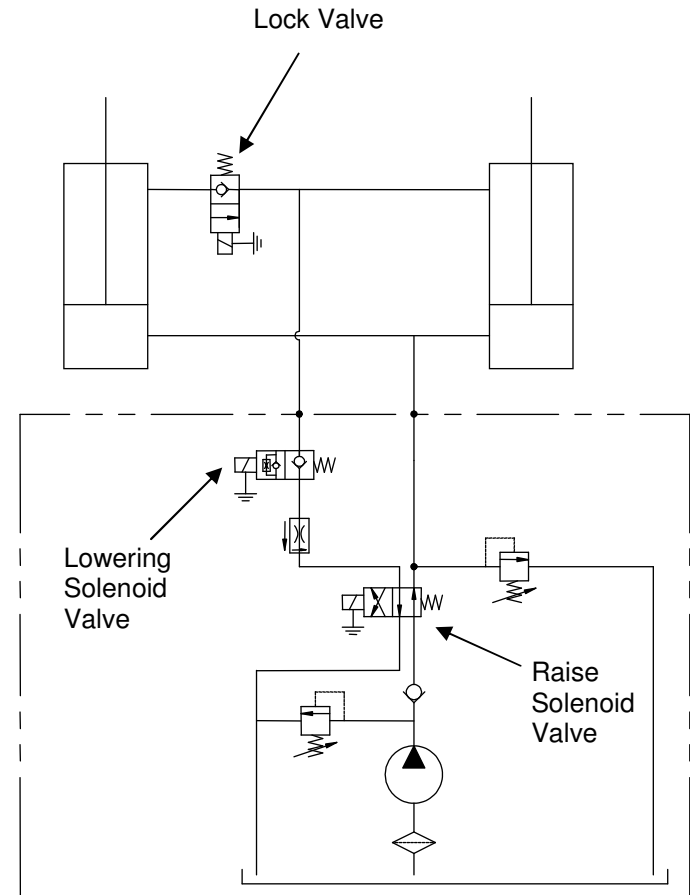
^a Included in Switch Kit 80000439.

^b Included in Switch Dual Control Kit 80000437.

^c Included in Switch Hand Held Remote Kit 80000430.

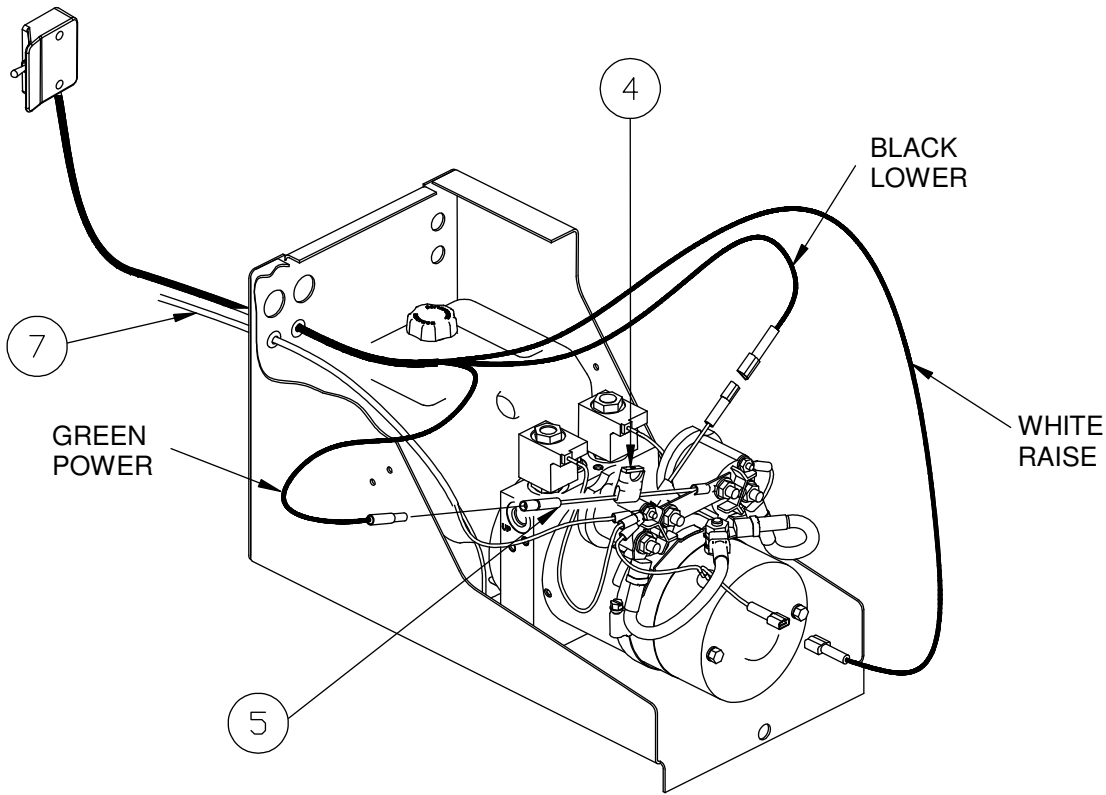
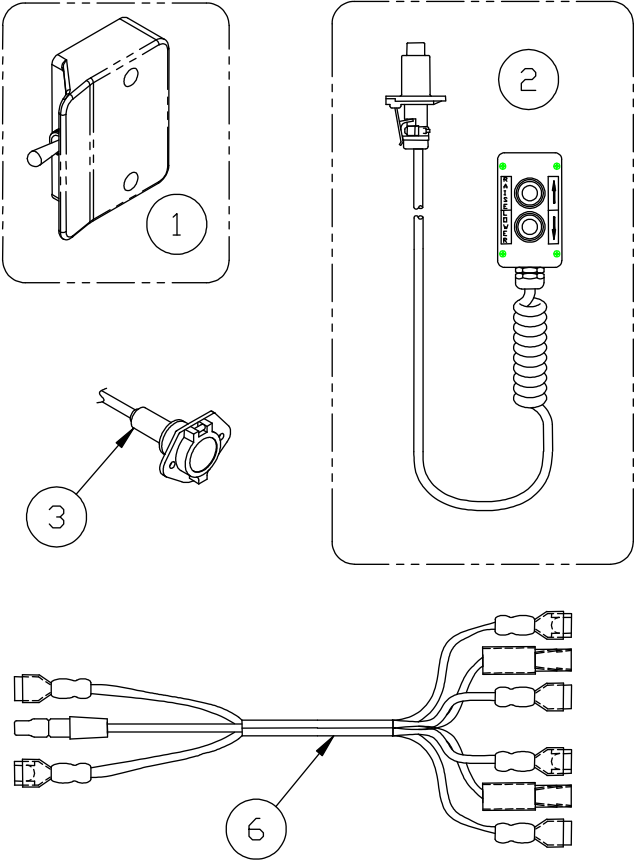


GR02798



GR02797

ELECTRIC CONTROL OPTIONS



Chapter 8 How To Order Parts

Repairs should be made only by authorized mechanics using WALTCO Replacement parts.

When ordering repair or replacement parts, please include all the information asked for below. If this information is not available, a complete written description or sketch of the required part will help WALTCO identify and deliver the needed part to you.

THE FOLLOWING INFORMATION MUST BE INCLUDED:

1. SERIAL NUMBER - [WALTCO liftgate serial numbers can be found on the Specification Tag attached to the mount frame. (On older units the Specification Tag is located on the side or bottom of the platform.)]
2. MODEL NUMBER - [Or capacity]
3. PLATFORM SIZE

THEN INCLUDE THE FOLLOWING INFORMATION:

4. PART NUMBERS
5. DESCRIPTION
6. QUANTITY REQUIRED

MAIL, E-MAIL OR PHONE YOUR REQUEST TO:

Waltco Truck Equipment Co.
285 Northeast Avenue
Tallmadge, OH 44278
1-800-411-5685
FAX: 1-800-411-5684
E-MAIL: parts@waltco.com

ALL PARTS ARE F.O.B. FROM THE SHIPPING FACTORY

PLEASE NOTE:

To assure you of continuing and effective quality control, our warranty policy permits replacement of hydraulic cylinders, valves and motor pump units when their factory seals are intact. Parts under warranty will be exchanged promptly after careful inspection of the returned assemblies.



Every vehicle that has a WALTCO Liftgate must have legible WARNING AND OPERATION DECALS clearly posted on the vehicle and an OWNER'S MANUAL in the vehicle at all times as a guide for proper operation and maintenance.

Additional WARNING DECALS, OPERATION DECALS and OWNER'S MANUALS can be obtained from WALTCO TRUCK EQUIPMENT COMPANY.

NOTE:

**When ordering, give model
and serial number of the liftgate.**



IMPORTANT

KEEP THIS OWNER'S MANUAL IN THE VEHICLE

WARNING

Improper operation and maintenance of this liftgate could result in severe personal injury or death.

Read and understand the contents of this manual and all warning and operation decals before operating and/or performing maintenance on this liftgate.

**For SAFETY information on this liftgate see
Chapter 1 of this manual**